

Mezzanine Inspection Report (Scoping)

Date: 03/12/2015	Station Name: Court House – K01	Mezzanine #: 096	Completed By: Balkis Hassane
------------------	---------------------------------	------------------	------------------------------

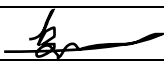
Summary

Scoping and pull string installation completed for all communication ducts for the faregate arrays. Video scoping completed for power ducts for faregate arrays and duct run from kiosk to AFC Panel in Electrical Equipment Room #205. Pull string was installed in power duct from kiosk to manhole 1, manhole 1 to manhole 2, and from manhole 2 to AFC Panel.

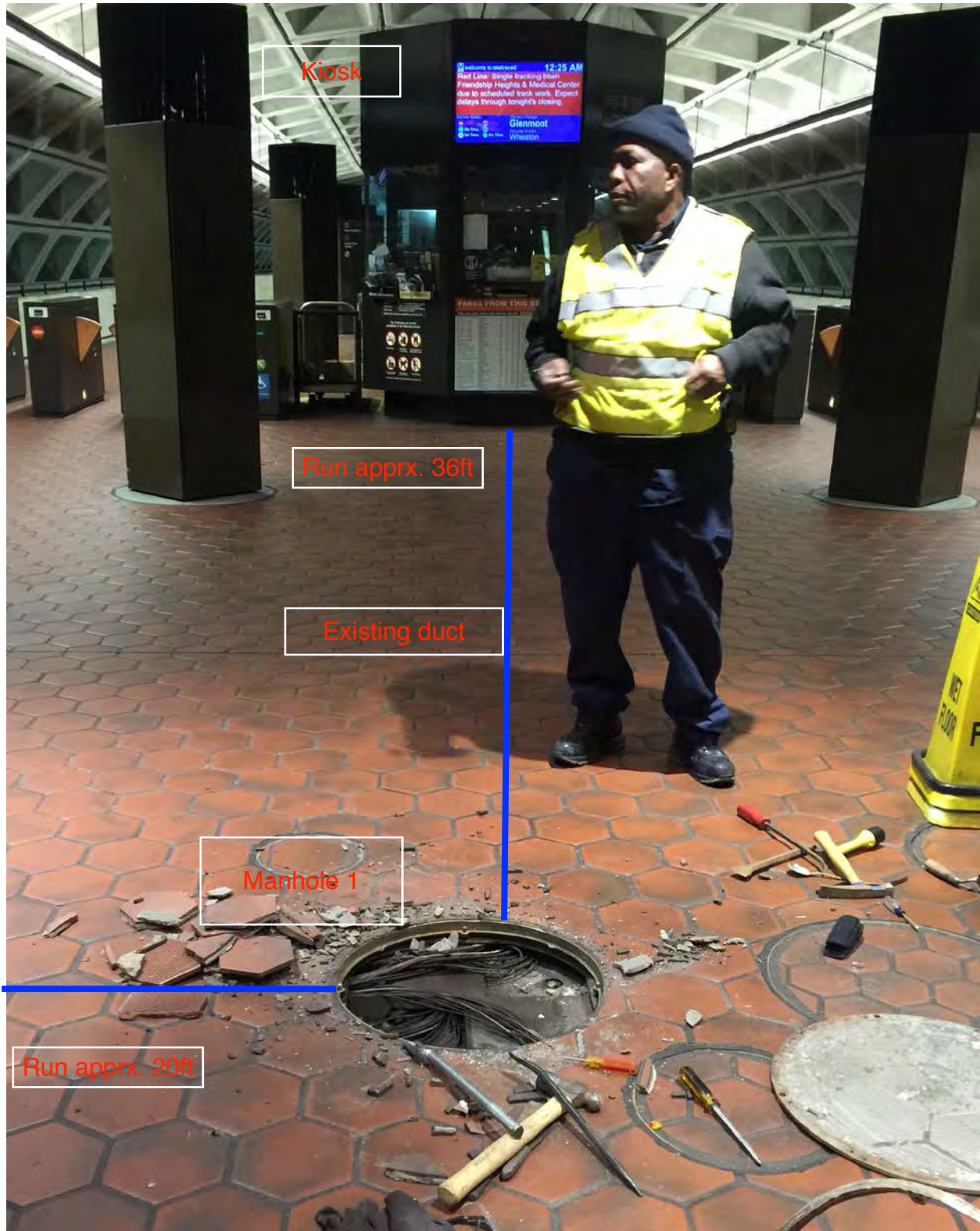
Scanning is not required at this mezzanine.

Scoping of Faregate Array(s)

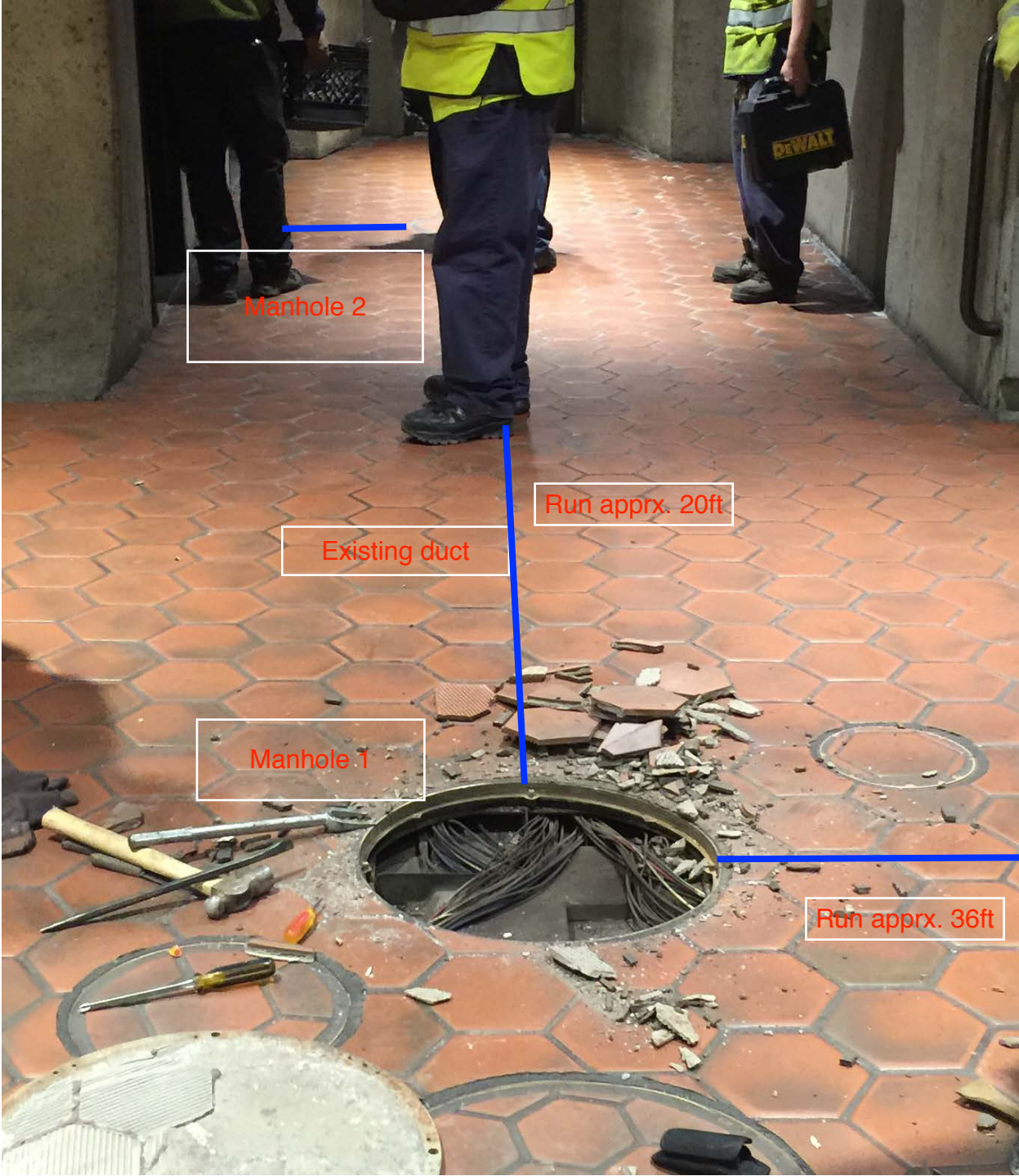
Task	Yes/No	Notes
Communications Duct - Upper Faregate Array (4 gates)		
Was video scoping completed for the entire duct run?	Yes	Refer to WMATA Courthouse 3inch Upper Comm Faregate.avi file.
Were pull strings installed at all faregates in the array?	Yes	
Were there any obstructions or blockages? Provide details of type and specific location.	No	
Is the duct at capacity? Provide additional details about the dimensions of ducts and number of wires.	No	3" duct less than 10 wires
Communications Duct - Lower Faregate Array (5 gates)		
Was video scoping completed for the entire duct run?	Yes	Refer to WMATA Courthouse 3inch Lower Comm Faregate.avi & WMATA Courthouse 6inch Lower Comm Faregate.avi files.
Were pull strings installed at all faregates in the array?	Yes	
Were there any obstructions or blockages? Provide details of type and specific location.	No	
Is the duct at capacity? Provide additional details about the dimensions of ducts and number of wires.	No	3" & 6" ducts less than 10 wires
Power Duct - Upper Faregate Array (4 gates)		
Was video scoping completed for the entire duct run?	Yes	Refer to WMATA Courthouse 3inch Upper Power Faregate.avi & WMATA Courthouse 6inch Upper Power Faregate.avi files.
Were there any obstructions or blockages? Provide details of type and specific location.	No	
Is the duct at capacity? Provide additional details about the dimensions of ducts and number of wires.	No	3" & 6" ducts less than 10 wires
Power Duct - lower Faregate Array (5 gates)		
Was video scoping completed for the entire duct run?	Yes	Refer to WMATA Courthouse 3inch Lower Power Faregate.avi & WMATA Courthouse 6inch Lower Power Faregate.avi files.
Were there any obstructions or blockages? Provide details of type and specific location.	No	3" duct collapsed at 3 rd faregate. 6" duct is in good condition.
Is the duct at capacity? Provide additional details about the dimensions of ducts and number of wires.	No	6" duct less than 10 wires

Scoping of Power Duct - Kiosk to AFC Panel		
Task	Yes/No	Notes
Kiosk to Manhole 1 (36' run)		
Was video scoping completed for the entire duct / conduit run?	Yes	Refer to WMATA Courthouse Kiosk to AFC Panel.avi file.
Was pull string installed?	Yes	
Were there any obstructions or blockages? Provide details of type and specific location.	No	
Is the duct / conduit at capacity? Provide additional details about the dimensions of duct / conduit and number of wires.	No	6" duct less than 12 wires.
Manhole 1 to Manhole 2 (20' run)		
Was video scoping completed for the entire duct / conduit run?	Yes	Refer to WMATA Courthouse 6inch HH1 to HH2 Power.avi file.
Was pull string installed?	Yes	
Were there any obstructions or blockages? Provide details of type and specific location.	No	
Is the duct / conduit at capacity? Provide additional details about the dimensions of duct / conduit and number of wires.	No	6" duct less than 12 wires.
Manhole 2 to AFC Panel (5' run)		
Was video scoping completed for the entire duct / conduit run?	Yes	Refer to WMATA Courthouse 6inch HH2 to HH3 Power.avi file.
Was pull string installed?	Yes	
Were there any obstructions or blockages? Provide details of type and specific location.	No	
Is the duct / conduit at capacity? Provide additional details about the dimensions of duct / conduit and number of wires.	No	6" duct less than 12 wires.
Observations / Issues / Next Steps		
Total run from kiosk to AFC Panel is approximately 61 feet.		
Sign Off		
	GFP Representative	WMATA PRGM
Name:	Balkis Hassane	
Signature:		
Date:	03/12/2015	

Picture 1: K01 Court House – Duct run from kiosk to manhole 1



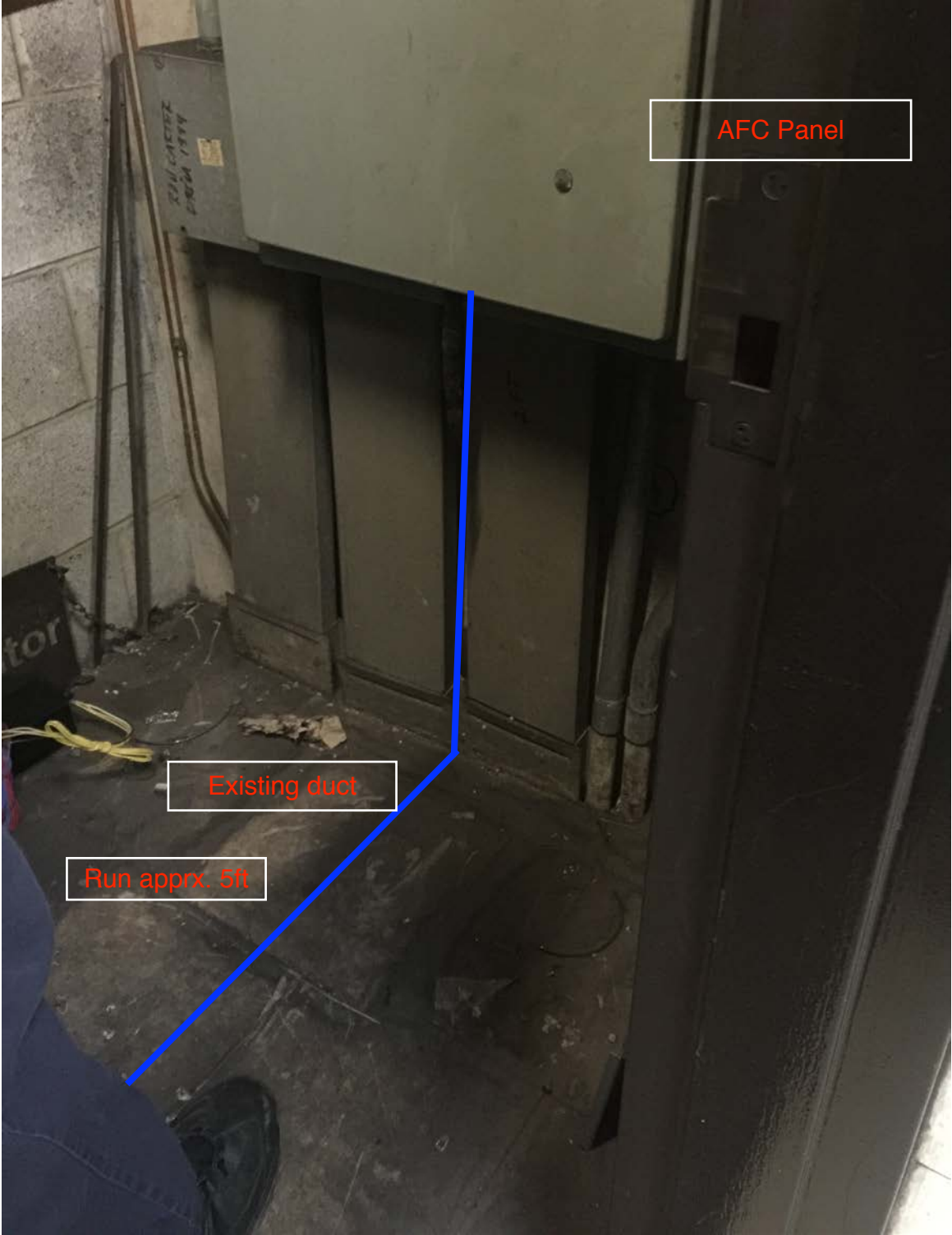
Picture 2: K01 Court House – Duct run from manhole 1 to manhole 2

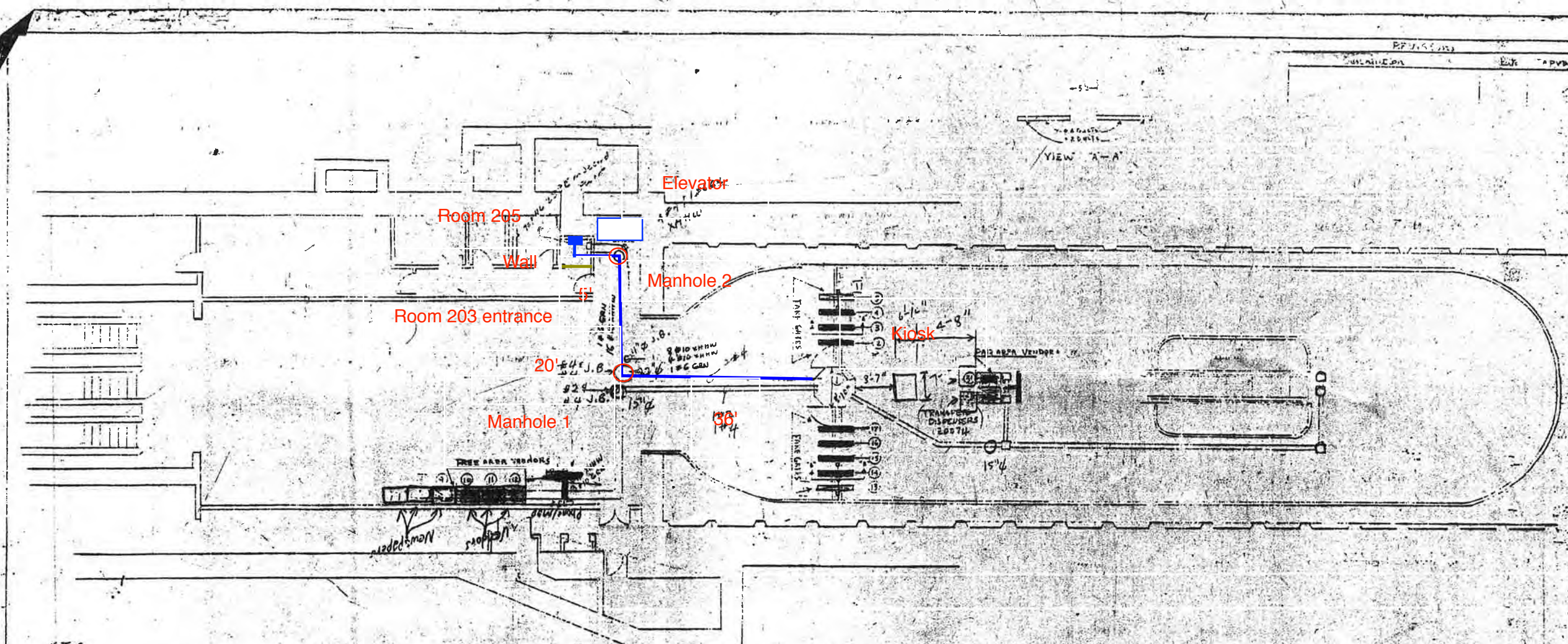


Picture 3: K01 Court House – Duct run from manhole 2 to AFC Panel



Picture 4: K01 Court House – Duct run into AFC Panel





NOTES:

1. All information concerning ducts and conduits is based on information supplied to Cubic Western Data by WMATA.
2. Total machine inventory is depicted on this drawing.
3. The minimum operational machine inventory is referenced on this drawing by the machine numbers.
4. For as built conditions see sheet 2, Service gates & Railings.
5. For reference information used see support documentation including for this drawing.

AS BUILT

AS BUILT AS OF 8-1-79 22007A

**WASHINGTON METROPOLITAN
AREA TRANSIT AUTHORITY**

CONTRACT NUMBER		CUBIC WESTERN DATA	
SHEET NUMBER		COURT HOUSE STATION A. P. C. MACHINES	
SHEET TITLE		DRAWING NUMBER 926-0410	
DESIGN	SCALE	DATE	DRAWN BY
APPROVAL			
SCALE		DATE	

#096

Mezzanine Inspection Report

Date: 06/08/2015	Station Name: K02 - Clarendon	Mezzanine #: 097	Completed By: Mike Butler
-------------------------	--------------------------------------	-------------------------	----------------------------------

Summary

NEPP-01: Video scoping and pull string installation was completed for communication duct in single faregate array; video scoping also completed in respective power duct. However, it was not possible to complete video scoping or pull string installation in existing power duct between Kiosk, Handhole and AFC Panel due to multiple collapses in the walker duct.

Scanning was conducted to identify a new power route from the Kiosk to AFC Panel. The scanning results showed that there is space for a proposed duct run; however alternate parallel ducts between the Kiosk and AFC Panel were also identified during scanning.

NEPP-02: Video scoping and pull string installation was completed in an empty alternate duct between Kiosk and Handhole and Abandoned Communication Panel in Room C203. The alternate duct runs parallel to the existing duct from the Kiosk to the Handhole (sharing the same handhole) and then splits off and runs to an abandoned communication panel. The panel appears to have a few abandoned communication wires inside. It is recommended to utilize the alternate duct run and install a proposed overhead conduit from the abandoned communications panel to the AFC Panel.

Refer to photos and drawings for additional information.

NEPP-01: Scoping of Single Faregate Array (02/02/15)

Task	Yes/No	Notes
Communications Duct – Faregate Array (5 gates)		
Was video scoping completed for the entire duct run?	Yes	Refer to "WMATA Clarendon 6inch Comm to Faregates (1).avi".
Were pull strings installed at all faregates in the array?	Yes	
Were there any obstructions or blockages? Provide details of type and specific location.	No	
Is the duct at capacity? Provide additional details about the dimensions of ducts and number of wires.	No	6" duct with less than 8 wires.
Power Duct - Faregate Array (5 gates)		
Was video scoping completed for the entire duct run?	Yes	Refer to "WMATA Clarendon 6 inch Power to Faregate (3).avi"
Were there any obstructions or blockages? Provide details of type and specific location.	No	
Is the duct at capacity? Provide additional details about the dimensions of ducts and number of wires.	No	6" duct with less than 10 wires.

NEPP-01: Scoping of Existing Power Duct - Kiosk to AFC Panel (02/02/15)		
Task	Yes/No	Notes
Kiosk to Handhole in Room C200 (Distance : 60')		
Was video scoping completed for the entire duct / conduit run?	No	Refer to "WMATA Clarendon 6 inch Power HH1 to Kiosk (2).avi".
Was pull string installed?	No	
Were there any obstructions or blockages? Provide details of type and specific location.	Yes	Collapsed at the 45 degree bend, 35' away from kiosk.
Is the duct / conduit at capacity? Provide additional details about the dimensions of duct / conduit and number of wires.	N/A	6" walker duct.
Handhole to AFC Panel in Room C203 (Distance: 65')		
Was video scoping completed for the entire duct / conduit run?	No	Refer to "WMATA Clarendon 6 inch Power HH1 to AFC Panel (2).avi".
Was pull string installed?	No	
Were there any obstructions or blockages? Provide details of type and specific location.	Yes	Duct collapsed at 35' from Handhole.
Is the duct / conduit at capacity? Provide additional details about the dimensions of duct / conduit and number of wires.	N/A	6" walker duct.
NEPP-01: Scanning of Mezzanine Floor (02/23/15)		
Scanning was conducted to identify a new power route from the Kiosk to AFC Panel. The scanning results showed that there is space for a proposed duct run; however alternate parallel ducts between the Kiosk and AFC Panel were also identified during scanning.		


NEPP-02: Scoping of Alternate Power Duct (06/08/15)		
Task	Yes/No	Notes
Kiosk to Handhole 2 in Room C200 (Distance: 60')		
Was video scoping completed for the entire duct / conduit run?	Yes	Refer to "K02_MZ097_Clarendon_Kiosk to HH2.avi".
Was pull string installed?	Yes	
Were there any obstructions or blockages? Provide details of type and specific location.	No	
Is the duct / conduit at capacity? Provide additional details about the dimensions of duct / conduit and number of wires.	No	Empty 6" walker duct.
Handhole 2 to Abandoned Comm. Panel (Distance: 60')		
Was video scoping completed for the entire duct / conduit run?	Yes	Refer to "K02_MZ097_Clarendon_HH2 to Abandoned Panel.avi".
Was pull string installed?	Yes	
Were there any obstructions or blockages? Provide details of type and specific location.	No	
Is the duct / conduit at capacity? Provide additional details about the dimensions of duct / conduit and number of wires.	No	Empty 6" walker duct.
Observations / Issues / Next Steps		
<ul style="list-style-type: none"> - The distance of proposed power route from Kiosk to AFC Panel is 145', including 120' of empty alternate duct between Kiosk and Abandoned Comm. Panel (Room C203) and 25' of proposed overhead conduit from Abandoned Comm. Panel to AFC Panel in Room C203. - The three panel 'punch outs' in Abandoned Comm. Panel to be sealed off to ensure separation of power and comm. wires. - Refer to attached photos and drawings for further information. 		
Sign Off		
	GFP Representative	WMATA PRGM
Name:	Mike Butler	
Signature:		
Date:	06/10/15	

Photo 1 – Existing and alternate duct runs on mezzanine floor.

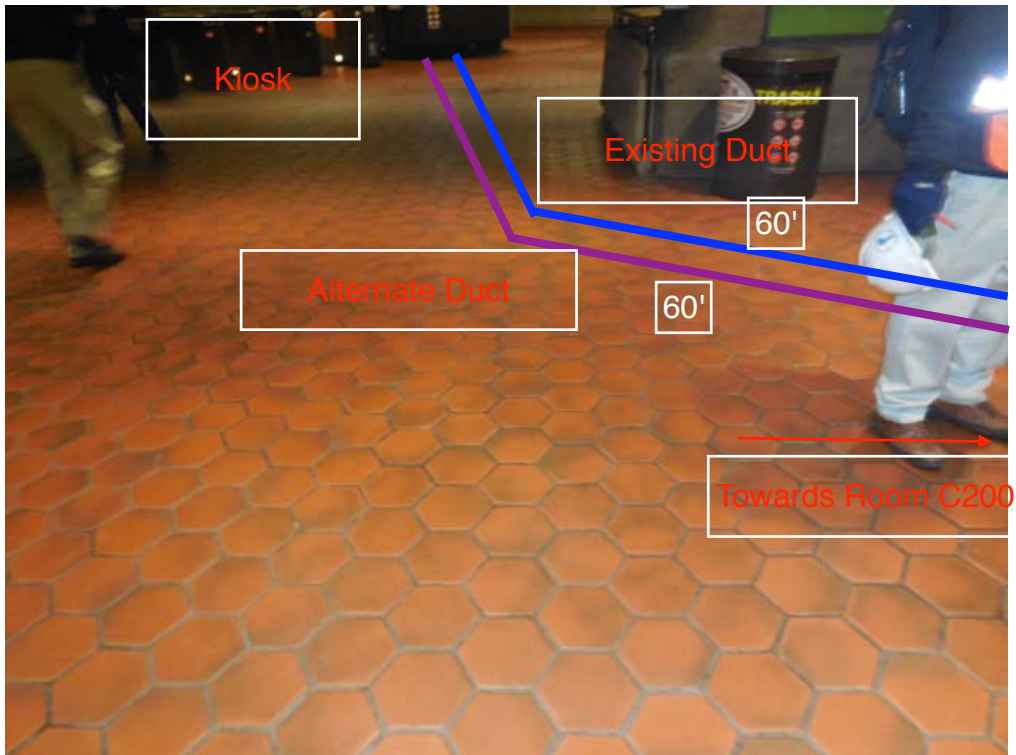


Photo 2 – Existing and alternate duct runs on mezzanine floor.

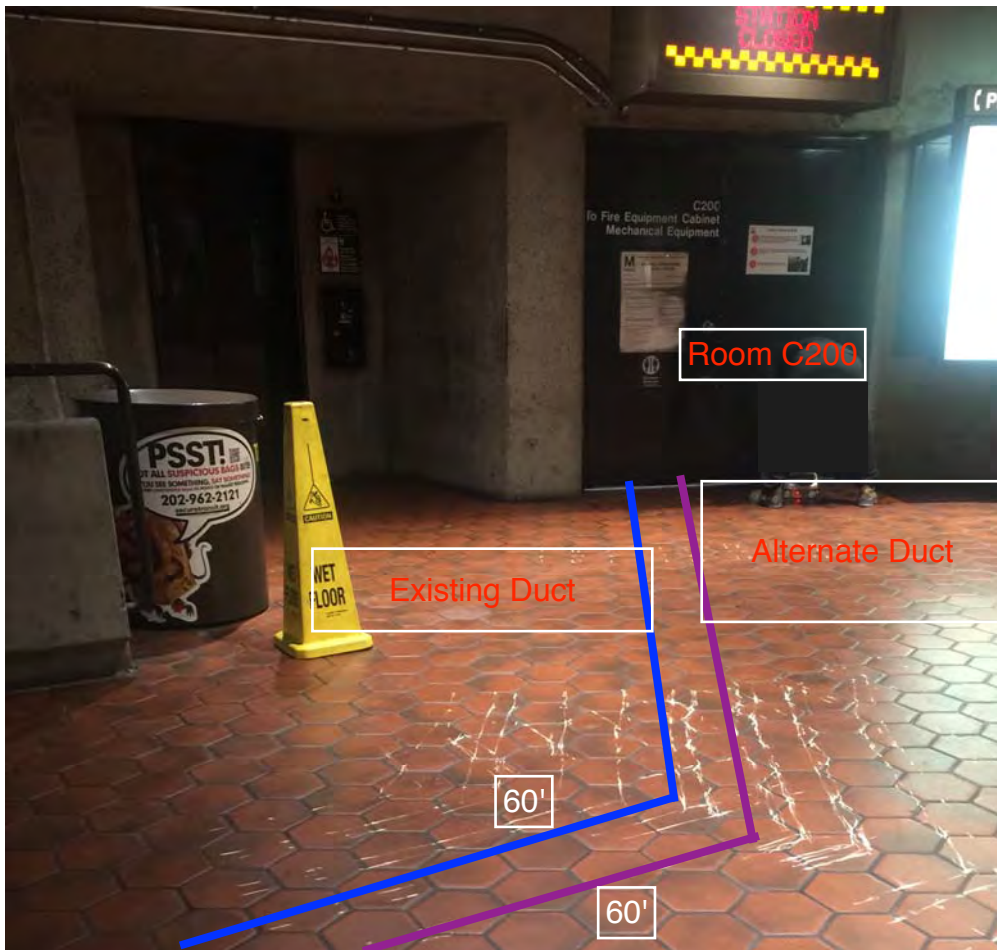


Photo 3 – Existing duct and handhole on in Room C200.

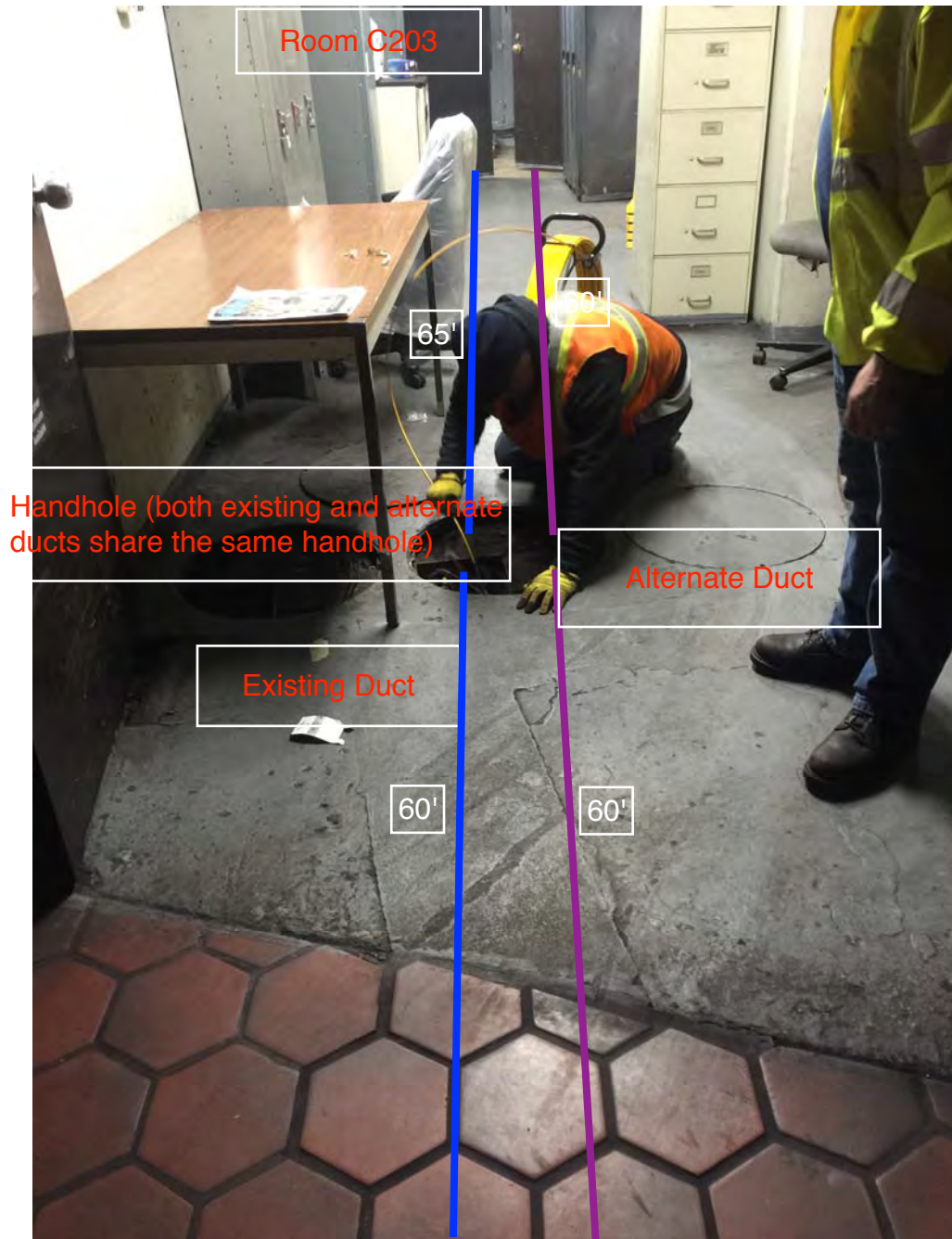


Photo 4 – Existing and alternate duct runs, and proposed overhead conduit from Abandoned Communication Panel to AFC Panel (Room C203)

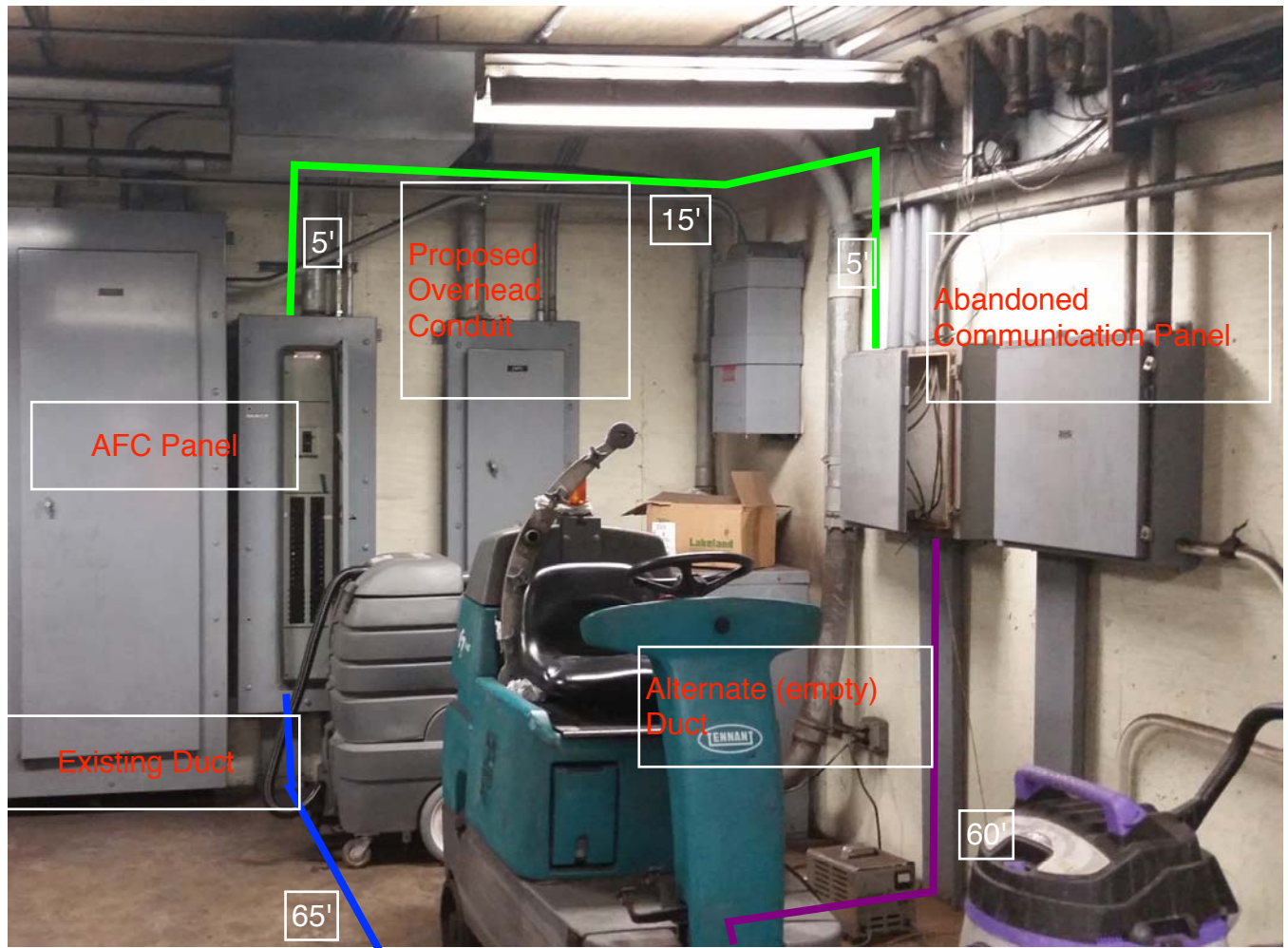
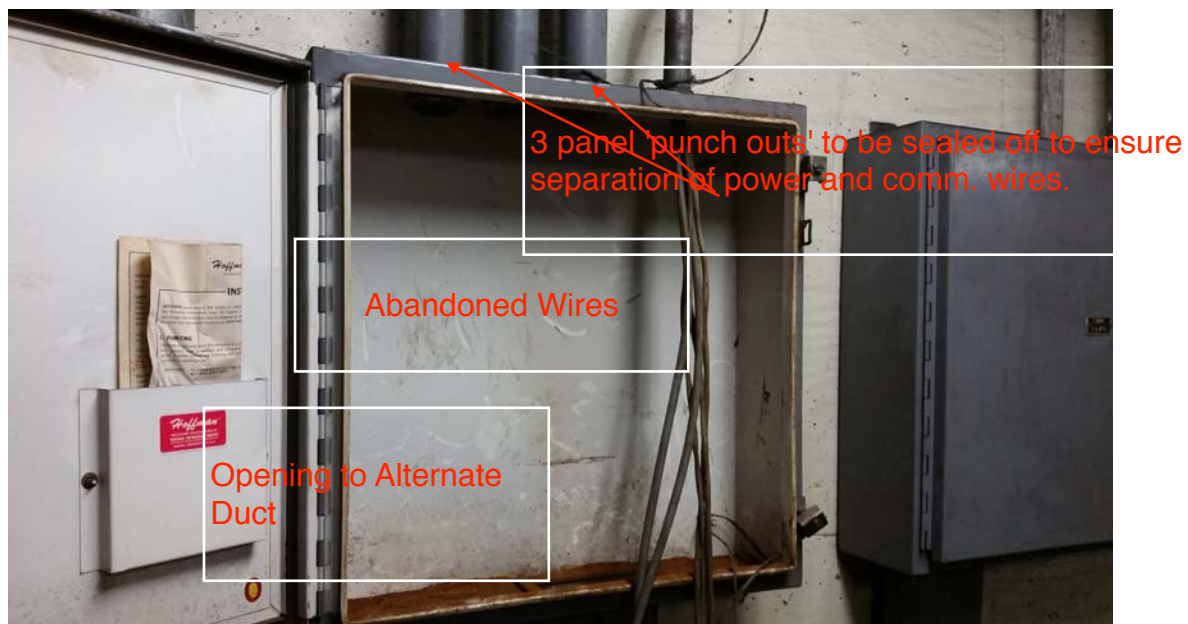
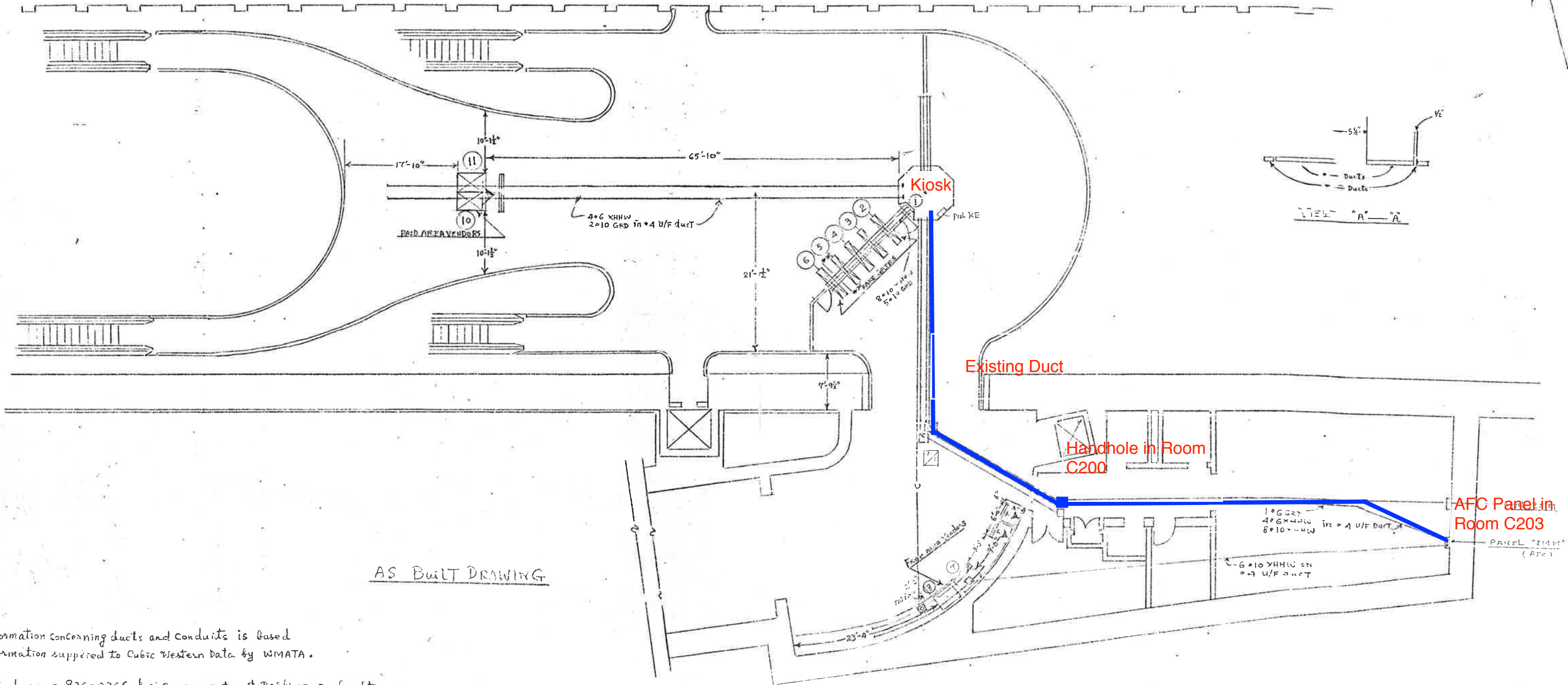


Photo 5 – Close-up of Abandoned Communication Panel (Room C203)





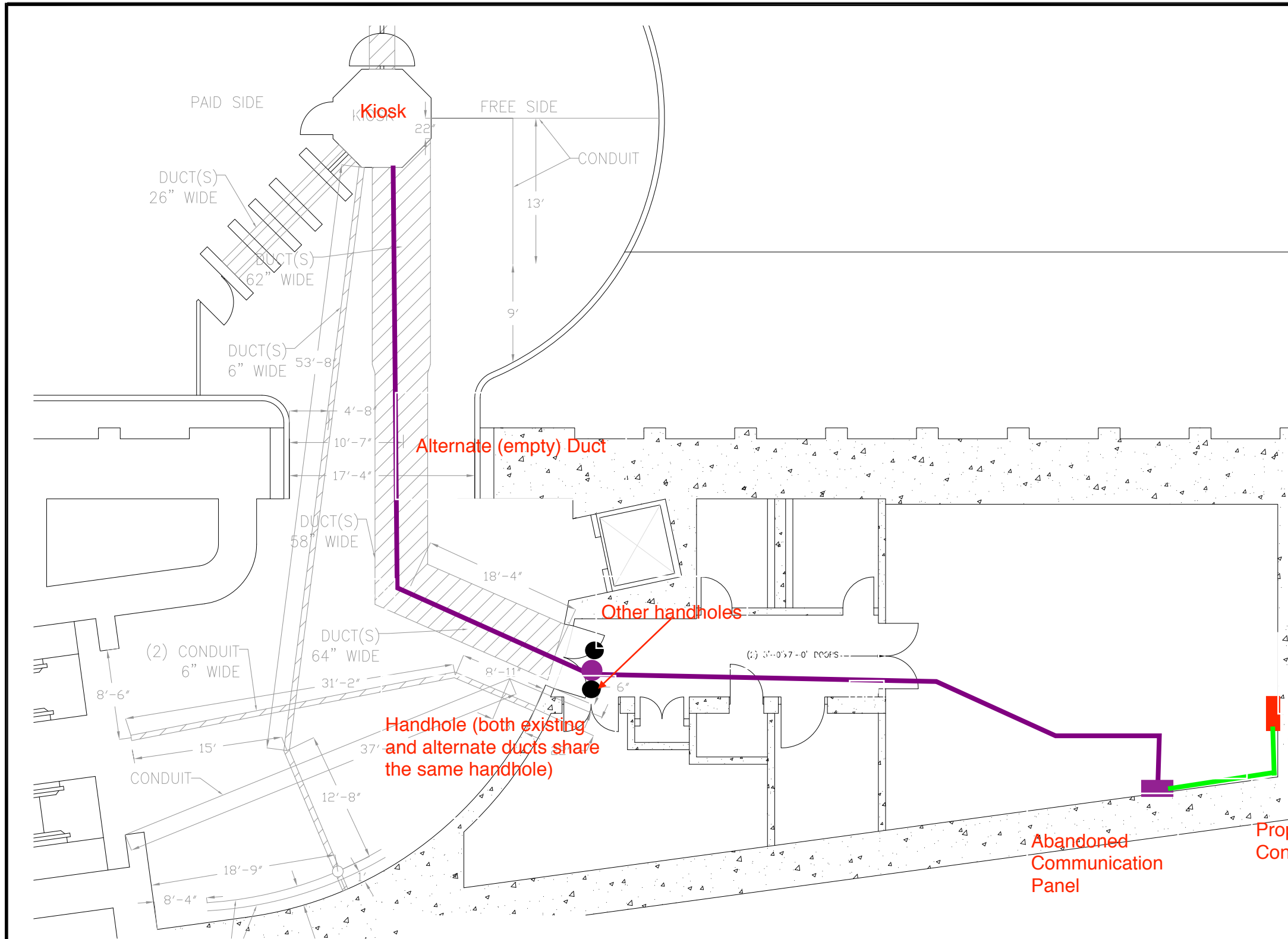
AS BUILT DRAWING

- NOTES:
1. ALL information concerning ducts and conduits is based on information supplied to Cubic Western Data by WMATA.
 2. Refer to drawing 926-0366 for service gates & parking as built.
 3. Refer to sheet 2 for machine inventory and panel schedule.
 4. Refer to sheet 926-0329 for interface requirements.

ITEM	WIRES	TYPE	RUN
FREE AREA VENDORS	* 10	XHHW	96'
HAND GATES	* 10	"	162'
PAID AREA VENDORS	* 6	"	225'
GROUND	* 6	"	150'
Service Gate	* 14	"	10' to 25'
DADS	* 10	"	—
SUBSYSTEM	* 10	"	—

CP-22007A-135-2-1
 WASHINGTON DC
 APRIL 1998

CONTRACT NUMBER		CUBIC WESTERN DATA A subsidiary of Cubic Corporation 5650 KEARNEY MESSIAH ROAD • POST OFFICE BOX 6787 • SAN DIEGO, CA 92168	
REV	DATE	CLARIFORD STATION A.W.C. MACHINES	
DESIGN	DATE	DESIGN NUMBER	97
CHECK	DATE	DRAWING NUMBER	926-0413
DRAWN	DATE	APPROVED	SHEET OF
DESIGN ACTIVITY APPROVAL	DATE	SCALE	



PLAN NOTES:

1. DIMENSIONS ARE IN FEET AND INCHES.
2. DIMENSIONS ARE FOR REFERENCE ONLY.
3. EXISTING IN-FLOOR DUCTS/CONDUITS WERE IDENTIFIED USING A PORTABLE GPR SCANNING DEVICE.
4. THE SCANNING COVERAGE IS LIMITED TO THE MEZZANINE FLOOR ONLY.
5. GPR SCANNING HAS THE FOLLOWING LIMITATIONS: (i) 12 INCHES VISIBLE SCANNING DEPTH; (ii) VISIBILITY BEYOND CONGESTED OR NEAR SURFACE REINFORCEMENT LAYERS; (iii) DETECTION OF PVC AND OTHER NON-METALLIC OBJECTS (iv) DETERMINATION OF SIZE AND EXTENTS OF SUBSURFACE ANOMALIES SUCH AS SLAB VOIDS OR REBAR SIZES; AND (v) VISIBILITY WHEN VARIABLE MOISTURE CONDITIONS EXIST IN THE SUBSTRATE.

LEGEND:



Alternate (empty) Duct

Other handholes

Handhole (both existing and alternate ducts share the same handhole)

AFC Panel

Abandoned Communication Panel

Proposed Overhead Conduit

CLARENDON STATION
SCALE: NOT TO SCALE

CONTRACT NO.
XXXXXX

DESIGNED	C. LOOSE	11-14
DRAWN	C. LOOSE	11-14
CHECKED	M. BUTLER	11-14
APPROVED		

REFERENCE DRAWINGS	
NUMBER	DESCRIPTION

REVISIONS		
NUMBER	DATE	DESCRIPTION

--

WASHINGTON METROPOLITAN AREA TRANSIT AUTHORITY
DEPARTMENT OF TRANSIT INFRASTRUCTURE AND ENGINEERING SERVICES
OFFICE OF INFRASTRUCTURE RENEWAL PROGRAM
APPROVED _____

GFP A Gannett Fleming/Parsons JOINT VENTURE
SUBMITTED _____
PROJECT MANAGER

SCALE
NOT TO SCALE

15-NEPP-01
IN - FLOOR DUCT INSPECTIONS
K02 Clarendon
PROPOSED POWER ROUTE
DRAWING NO.
K02-E-100

XXX